

Lot #XXXXXX

BostonBiochem

MATERIAL DATA SHEET

Me₄BodipyFL-Ahx₃Leu₃VS (Proteasome Activity Probe)

Cat. # I-190

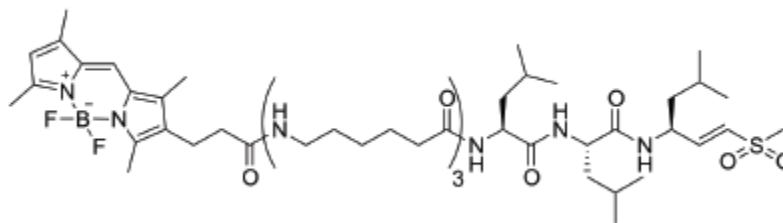
A cell permeable fluorescent proteasome activity probe that allows for accurate profiling of proteasomal activity in cell lysates, intact cells, and murine and human patient-derived material, with high sensitivity.

Product Information

Quantity: 50 µg

Formula: C₅₄H₈₉BF₂N₈O₈S **FW:** 1059.21

Structure:



Physical/Chemical Characteristics

Solubility: Soluble at 50 - 250 µM in DMSO. Store at -20°C. Avoid multiple freeze/thaw cycles.

Purity: > 95% by HPLC.

Use: For cell lysate labeling and general flow cytometry experiments a 1-5 µM final concentration is recommended. Fluorescence can be monitored using Ex515nm and Em519 nm wavelengths.

Literature

References: Berkers, C.R., *et al.* (2007) Mol. Pharm. **4**: 739-748

For Laboratory Research Use Only, Not For Use in Humans

840 Memorial Drive, Cambridge, MA 02139 Phone: 617-241-7072 FAX: 617-492-3565

www.bostonbiochem.com

The contents of this datasheet (unless otherwise noted) are Copyright © 2008 Boston Biochem, Inc. All rights reserved. Duplication in whole or in part is strictly prohibited without the express written consent of Boston Biochem, Inc. "Boston Biochem" is a Trademark of Boston Biochem, Inc., 840 Memorial Drive, Cambridge, MA 02139.