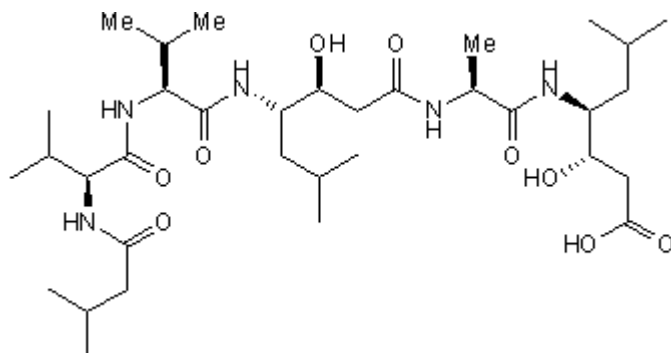


Pepstatin A

Cat. No. 1190



Biological Activity

Irreversible inhibitor of aspartic proteases. Inhibits lysosomal proteases and interferes with autolysosomal digestion when used in combination with [E 64d](#) (Cat. No. 4545).

Technical Data

M.Wt:

685.89

Formula:

C₃₄H₆₃N₅O₉

Sequence:

VVA

(Modifications: Val-1 = N-terminal H-iso-Valeryl, Val-2 = Val-4-amino-3-hydroxy-6-methylheptanoyl, Ala-3 = Ala-4-amino-3-hydroxy-6-methylheptanoic-acid)

Solubility:

Soluble to 1 mg/ml in ethanol with gentle warming

Storage:

Desiccate at -20°C

Phone: (800) 343-7475 (612) 379-2956

Fax: (612) 656-4400

Email: customerservice@rndsystems.com

CAS No:

26305-03-3

The technical data provided above is for guidance only.
For batch specific data refer to the Certificate of Analysis.

References

Merck Index *12* 7290.

Marciniszyn *et al* (1976) Mode of inhibition of acid proteases by pepstatin. *J.Biol.Chem.* **251** 7088.
PMID: [993206](#).

Sato *et al* (2007) Autophagy is activated in colorectal cancer cells and contributes to the tolerance to nutrient deprivation. *Cancer Res.* **67** 9677. PMID: [17942897](#).

Phone: (800) 343-7475 (612) 379-2956

Fax: (612) 656-4400

Email: customerservice@rndsystems.com