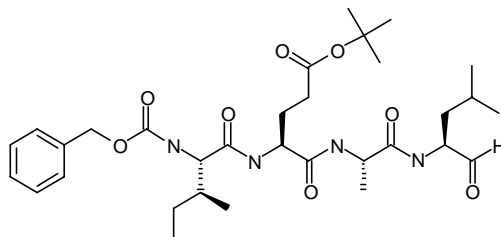


MATERIAL DATA SHEET**Z-Ile-Glu(OtBu)-Ala-Leu-CHO****Cat. # I-140**

Peptide aldehydes form a covalent hemiacetal adduct with the 20S proteasome, inhibiting the chymotrypsin-like peptidase activity. These inhibitors are reversible and cell-permeable, and also inhibit the activity of calpains and cathepsins.

Product Information**Quantity:** 5 mg**Formula:** C₃₂H₅₀N₄O₈ **FW:** 618.8**Structure:****Physical/Chemical Characteristics****Purity:** > 95% by HPLC. Structure confirmed by NMR.**Use:** Add from DMSO stock directly to *in vitro* or *in vivo* assay at desired concentration. Soluble up to 15 mg/ml. Pre-incubation with compound prior to assay is recommended for maximal effect.**Storage:** Store at -20°C. Avoid multiple freeze/thaw cycles.**Literature****References:** Mori S., *et al.* (1995) *J. Biol. Chem.* **270**:29447-29452
Myung J., *et al.* (2001) *Med. Res. Rev.* **4**:245-273
Rodgers K.J. and Dean R.T. (2003) *Intl. J. Biochem. Cell. Biol.* **35**:716-727
Vinitsky A., *et al.* (1994) *J. Biol. Chem.* **269**:29860-29860

For Laboratory Research Use Only, Not For Use in Humans