

Lot # XXXXX

BostonBiochem

MATERIAL DATA SHEET

Z-Leu-Leu-Leu-CHO (MG-132)

Cat. # I-130

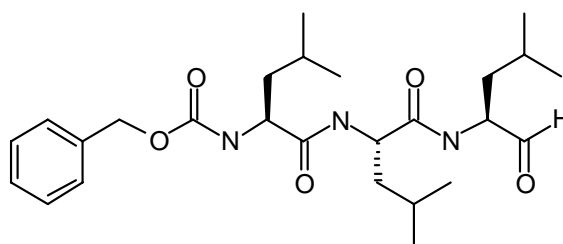
Peptide aldehydes form a covalent hemiacetal adduct with the 20S proteasome, inhibiting the chymotrypsin-like peptidase activity. These inhibitors are reversible and cell-permeable, and also inhibit the activity of calpains and cathepsins.

Product Information

Quantity: X mg

Formula: C₂₆H₄₁N₃O₅ **FW:** 475.63

Structure:



Physical/Chemical Characteristics

Solubility: Soluble in DMSO up to 15 mg/ml.
Note: Pellet may have oily appearance.

Purity: > 95% by HPLC.

Activity: K_i = 4.2 nM vs. SDS-activated 20S proteasome. IC₅₀ in cell culture = 5 μM.

Use & Storage

Use: Add from DMSO stock directly to *in vitro* or *in vivo* assays at desired concentration. Pre-incubation with compound prior to assay is recommended for maximal effect.

Storage: Store stock solution at -20°C. Avoid multiple freeze/thaw cycles.

Literature

References: Adams J., *et al.* (1998) Bioorg. Med. Chem. Lett. **8**:333-338
Lee D.H. and Goldberg A.L. (1998) Tren. Cell. Biol. **8**:397-403
Lee D.H. and Goldberg A.L. (1996) J. Biol. Chem. **271**:27280-27284
McCormack T.A., *et al.* (1998) Biochem. **37**:7792-7800
Wilk S., *et al.*, (1993) Enz. Prot. **47**:306-313

For Laboratory Research Use Only, Not For Use in Humans